

FINISHES

**Finiture
Materialien
Finitions
Acabados**

arper

Metalli
Metals
Métalle
Métal
Metal



CRO



LU1



V12
glossy



V34
matt



V39
matt

Pelle
Soft leather
Weichleder
Cuir souple
Piel



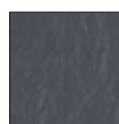
PF00001



PF00002



PF00008



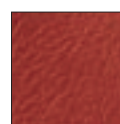
PF00010



PF00003



PF00004



PF00005



PF00006



PF00007



PF00009



PF00011



PF00012



PF00013

Ecopelle 1
 Faux leather 1
 Kunstleder 1
 Similcuir 1
 Ecopiel 1





CHROME FREE
 Pelle Elmosoft
 Soft leather Elmosoft
 Weichleder Elmosoft
 Cuir souple Elmosoft
 Piel Elmosoft

						
ES00100	ES00109	ES01003	ES01037	ES01040	ES01061	
						
	ES02020	ES02048	ES04012	ES04054	ES05007	
						
ES05011	ES06026	ES07032	ES07068	ES07075	ES08005	ES08017
						
ES11049	ES11054	ES12074	ES12080	ES13041	ES13053	ES13060
						
ES13064	ES13072	ES13078	ES17027	ES22030	ES33001	ES33004
						
ES35126	ES43031	ES44005	ES44026	ES44066	ES45016	ES45065
						
ES54035	ES55002	ES55148	ES57019	ES57349	ES66022	ES71017
						
ES76025	ES77030	ES77127	ES77158	ES78012	ES87088	ES88009
						
ES93068	ES93129	ES95006	ES95122	ES97038	ES98015	ES99999

No Stain



ZM00001



ZM00002



ZM00003



ZM00004



ZM00005



ZM00006



ZM00007



ZM00008



ZM00009



ZM00010



ZM00011



ZM00012



ZM00013



ZM00014



ZM00015



ZM00016



ZM00017



ZM00018



ZM00019



ZM00020



ZM00021



ZM00022



ZM00023



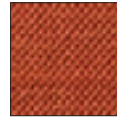
ZM00024



ZM00025



ZM00026



ZM00027



ZM00028



ZM00029



ZM00030



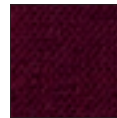
ZM00031



ZM00032



ZM00033



ZM00034

kvadrat

Cava 3
(EU Ecolabel)



Kvadrat's Cava 3
has been awarded
the EU Ecolabel



kvadrat

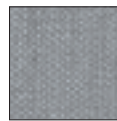
Clara



CL00744



CL00144



CL00148



CL00184



CL00188



CL00244



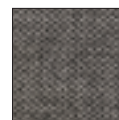
CL00248



CL00344



CL00348



CL00384



CL00388



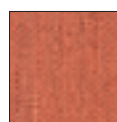
CL00444



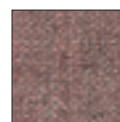
CL00448



CL00544



CL00548



CL00584



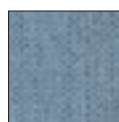
CL00588



CL00684



CL00688



CL00748



CL00784



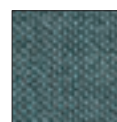
CL00788



CL00844



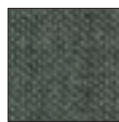
CL00848



CL00884



CL00888



CL00984



CL00988

kvadrat

Divina 3



kvadrat

Divina Melange 2



DM00170



DM00120



DM00180



DM00220



DM00260



DM00280



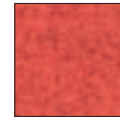
DM00421



DM00471



DM00521



DM00531



DM00571



DM00581



DM00621



DM00631



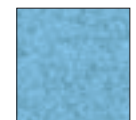
DM00671



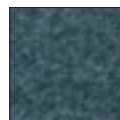
DM00681



DM00721



DM00731



DM00771



DM00821



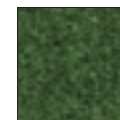
DM00871



DM00920



DM00931



DM00971

kvadrat

Divina MD



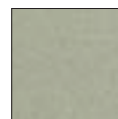
DI00633



DI00653



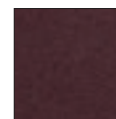
DI00203



DI00913



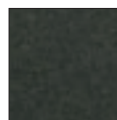
DI00613



DI00673



DI00943



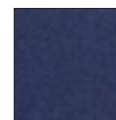
DI00973



DI00683



DI00783



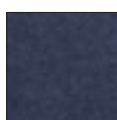
DI00773



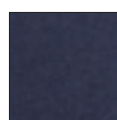
DI00713



DI00733



DI00743



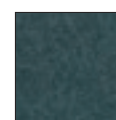
DI00753



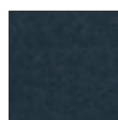
DI00813



DI00433



DI00843



DI00873



DI00413



DI00343



DI00453



DI00213



DI00293



DI00353



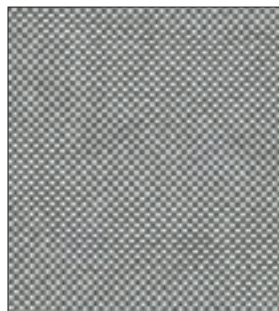
DI00363



DI00193

kvadrat

Field



FI00132



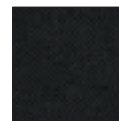
FI00142



FI00172



FI00182



FI00192



FI00222



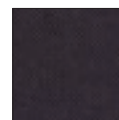
FI00232



FI00242



FI00252



FI00382



FI00432



FI00542



FI00642



FI00662



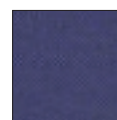
FI00682



FI00752



FI00762



FI00772



FI00782



FI00932



FI00942



FI00952



FI00972



FI00982

kvadrat

Flora 2



kvadrat

Hallingdal 65
(EU Ecolabel)



Kvadrat's Hallingdal 65
has been awarded
the EU Ecolabel

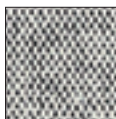
HA00103	HA00126	HA00130	HA00143	HA00153	HA00166	
HA00173	HA00180	HA00190	HA00200	HA00220	HA00224	HA00227
HA00270	HA00350	HA00368	HA00370	HA00376	HA00390	HA00407
HA00420	HA00457	HA00526	HA00547	HA00563	HA00573	HA00590
HA00596	HA00600	HA00657	HA00660	HA00674	HA00680	HA00687
HA00694	HA00702	HA00723	HA00733	HA00750	HA00753	HA00754
HA00763	HA00764	HA00773	HA00810	HA00840	HA00850	HA00890
HA00907	HA00944	HA00960	HA00968	HA00980		

kvadrat

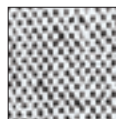
Lazio 2



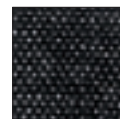
LZ00123



LZ00132



LZ00133



LZ00152



LZ00153



LZ00162



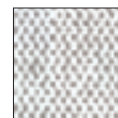
LZ00163



LZ00173



LZ00192



LZ00222



LZ00242



LZ00333



LZ00343



LZ00352



LZ00362



LZ00373



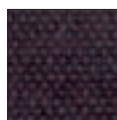
LZ00422



LZ00552



LZ00623



LZ00653



LZ00673



LZ00683



LZ00733



LZ00773



LZ00853



LZ00873



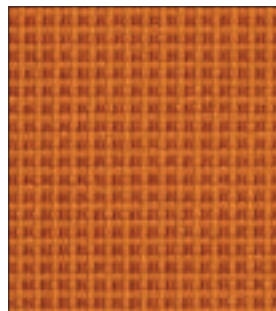
LZ00923



LZ00933

kvadrat

Pro 2



P200511



P200123



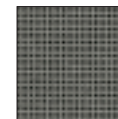
P200181



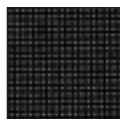
P200191



P200193



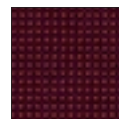
P200231



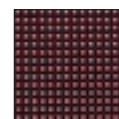
P200241



P200343



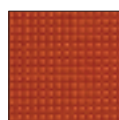
P200353



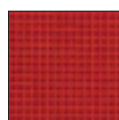
P200363



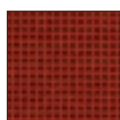
P200373



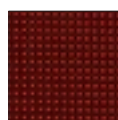
P200521



P200543



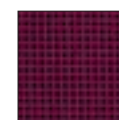
P200621



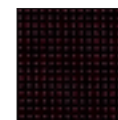
P200631



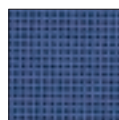
P200653



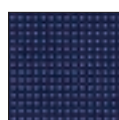
P200663



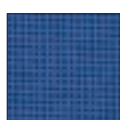
P200693



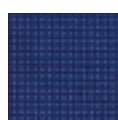
P200731



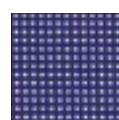
P200741



P200751



P200761



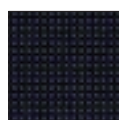
P200763



P200771



P200773



P200781



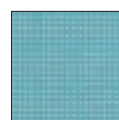
P200783



P200793



P200823



P200833



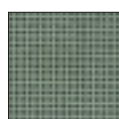
P200863



P200943



P200953



P200973



P200983

kvadrat

Remix 2
(EU Ecolabel)



Kvadrat's Remix 2
has been awarded
the EU Ecolabel

						
RX00113	RX00123	RX00133	RX00143	RX00152	RX00163	
						
	RX00173	RX00183	RX00223	RX00233	RX00242	
						
RX00252	RX00362	RX00373	RX00383	RX00393	RX00412	RX00422
						
RX00433	RX00443	RX00452	RX00543	RX00612	RX00632	RX00643
						
RX00653	RX00662	RX00672	RX00682	RX00692	RX00722	RX00733
						
RX00743	RX00753	RX00762	RX00773	RX00783	RX00823	RX00842
						
RX00852	RX00753	RX00912	RX00923	RX00933	RX00942	RX00954
						
RX00962	RX00973	RX00982				

kvadrat

Scuba



kvadrat

Steelcut Trio 2



kvadrat

Steelcut 2



kvadrat

Sunniva



SU00143



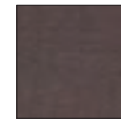
SU00236



SU00321



SU00467



SU00570



SU00674



SU00717



SU00811



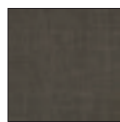
SU00975



SU01079



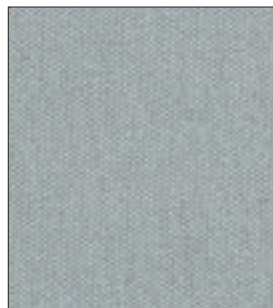
SU01180



SU01271

kvadrat

Tempo



TM00130



TM00170



TM00190



TM00230



TM00250



TM00370



TM00550



TM00570



TM00630



TM00650



TM00670



TM00690



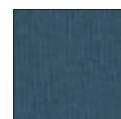
TM00710



TM00730



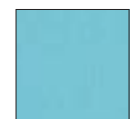
TM00750



TM00770



TM00790



TM00830



TM00850



TM00930



TM00950



TM00970

kvadrat

Tonus 3



T300106



T300100



T300109



T300111



T300118



T300119



T300122



T300123



T300124



T300125



T300126



T300127



T300128



T300129



T300130



T300131



T300132



T300133



T300135



T300201



T300207



T300209



T300210



T300211



T300215



T300216



T300240



T300380



T300440



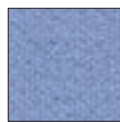
T300450



T300505



T300508



T300509



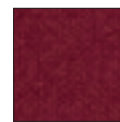
T300605



T300608



T300609



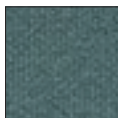
T300610



T300613



T300614



T300615



T300619



T300620



T300622



T300623



T300624



T300625



T300627



T300628



T300629



T300630



T300631



T300632



T300633



T300634



T300635



T300636



T300640



T300680



T300690



T300740



T300780



T300840



T300940



T300980

kvadrat

Topas 2
(EU Ecolabel)



Kvadrat's Topas 2
has been awarded
the EU Ecolabel



TO00124



TO00104



TO00134



TO00144



TO00156



TO00164



TO00174



TO00184



TO00186



TO00194



TO00204



TO00216



TO00226



TO00236



TO00304



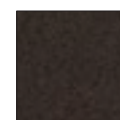
TO00314



TO00324



TO00346



TO00366



TO00404



TO00414



TO00426



TO00446



TO00454



TO00464



TO00504



TO00514



TO00524



TO00536



TO00546



TO00604



TO00614



TO00624



TO00634



TO00644



TO00654



TO00664



TO00674



TO00684



TO00694



TO00704



TO00714



TO00724



TO00734



TO00744



TO00754



TO00756



TO00764



TO00766



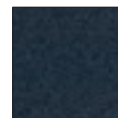
TO00774



TO00784



TO00794



TO00796



TO00804



TO00814



TO00824



TO00834



TO00846



TO00904



TO00914



TO00926



TO00934



TO00944



TO00956



TO00966



TO00976



TO00986



Istituito nel 1992, il marchio comunitario di qualità ecologica o Ecolabel, il cui logo è rappresentato da un fiore, è uno speciale sistema di certificazione creato per aiutare i consumatori europei a scegliere prodotti e servizi più ecologici e più rispettosi dell'ambiente.

Established in 1992, the EU Eco-label "Flower" is a unique certification scheme aimed to help European consumers distinguish greener, more environmentally friendly, products and services.

Hinter der "Blume", dem 1992 ins Leben gerufenen EU-Umweltzeichen, steckt ein einzigartiges Zertifizierungssystem, das dem europäischen Verbraucher das Erkennen umweltfreundlicherer Produkte und Dienstleistungen erleichtern soll.

Établi en 1992, le label écologique de l'EU symbolisé par la "Fleur" est un système d'homologation unique destiné à aider les consommateurs européens à discerner les produits et services plus verts et plus favorables à l'environnement.

Creada en 1992, la etiqueta ecológica de la UE, también conocida como "la flor", constituye un sistema de certificación único, cuyo objetivo es ayudar a los consumidores europeos a identificar los productos y servicios más ecológicos y respetuosos del medio ambiente.

I colori visualizzati sono puramente indicativi e possono variare rispetto alla realtà. Rivolgersi ad Arper o al proprio rivenditore di fiducia per ricevere un campione colore o per maggiori informazioni.

Colours shown are used for reference only and may look different in reality. Please contact Arper or your retailer to receive a colour sample or more information.

Bei den angezeigten Farben handelt es sich um reine Farbbeispiele, die von der Realität abweichen können.
Für Farbmuster und nähere Informationen wenden Sie sich bitte an Arper oder an den Händler Ihres Vertrauens.

La reproduction photographique des couleurs n'est que purement indicative et peut être différente de la réalité. S'adresser à Arper ou à votre revendeur de confiance pour recevoir un échantillon de couleur ou pour de plus amples informations.

Los colores visualizados son meramente indicativos y pueden diferir de la realidad. Para recibir una muestra del color o para más información, contactar a Arper o a su distribuidor de zona.

Arper SPA si riserva di apportare modifiche e/o migliorie di carattere tecnico ed estetico ai propri modelli e prodotti in qualsiasi momento e senza preavviso.
Per maggiori informazioni visitate il sito www.arper.com

Arper SPA reserves the right to make modifications and improvements of a technical or aesthetic nature to the products at any time without notice.
For further information, please visit www.arper.com