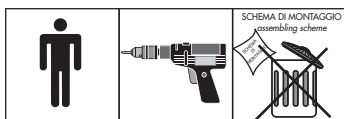


**SCHEMA DI MONTAGGIO/assembling scheme**

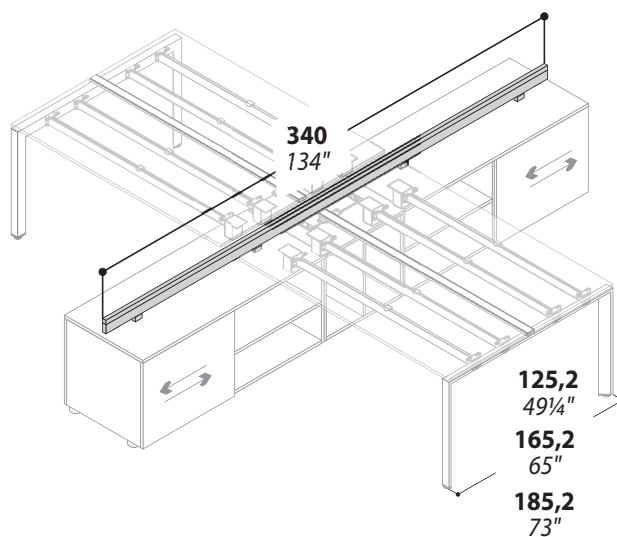
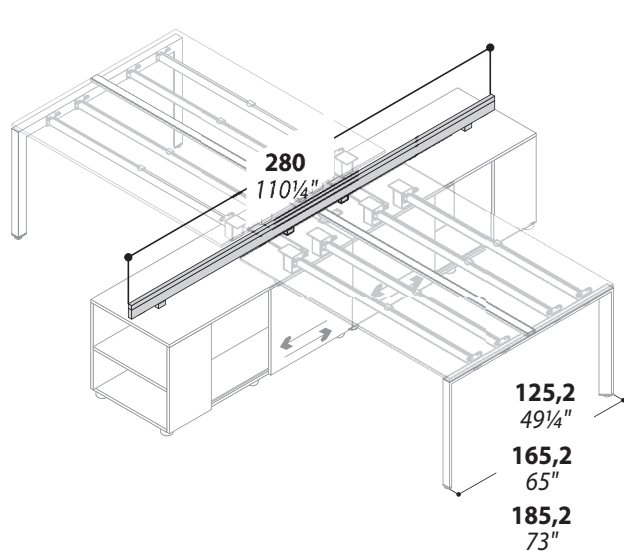
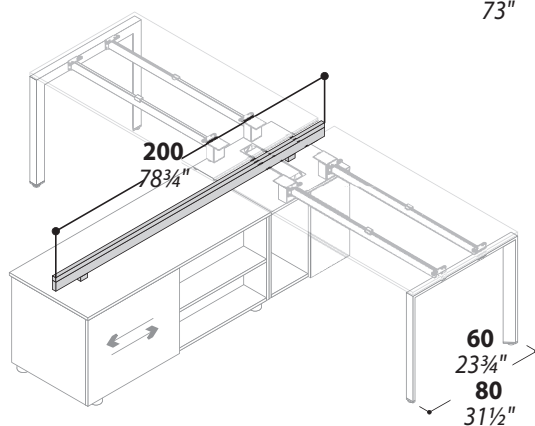
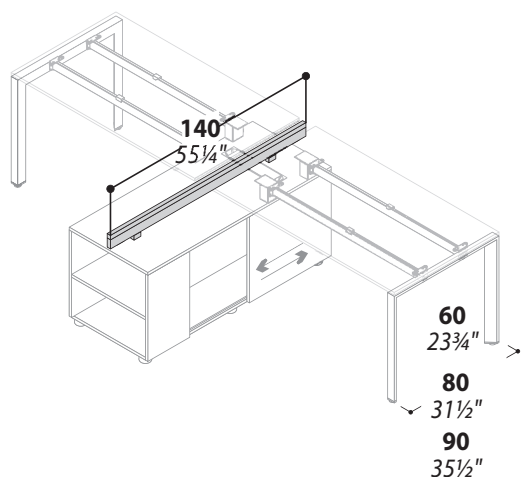
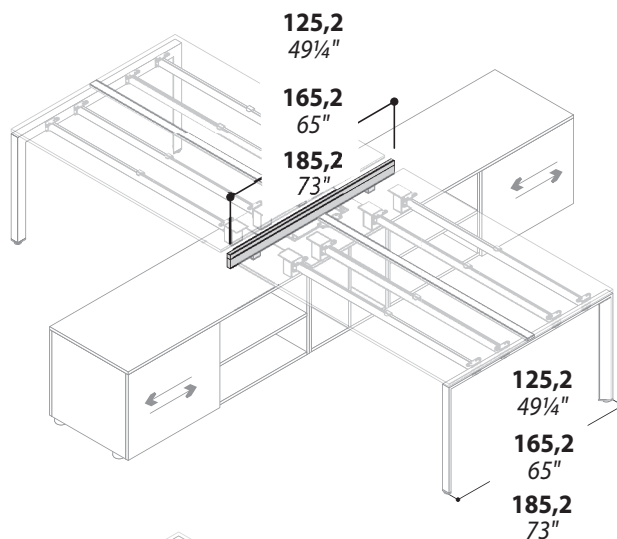
BARRE ATTREZZABILI LATERALI  
lateral toolbars



|                    |             |
|--------------------|-------------|
| CODICE<br>code     | 777 700 664 |
| DISEGNO<br>drawing | SM 52041    |
| DATA<br>date       | 12-09-2012  |
| PAGINA<br>page     | 1/2         |

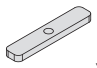
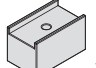
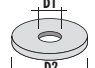
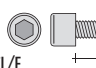
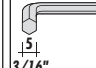


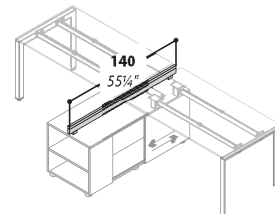
SEGUE  
assembling in the following page

**ESEMPI/examples**

SEGUE  
assembling in the following page

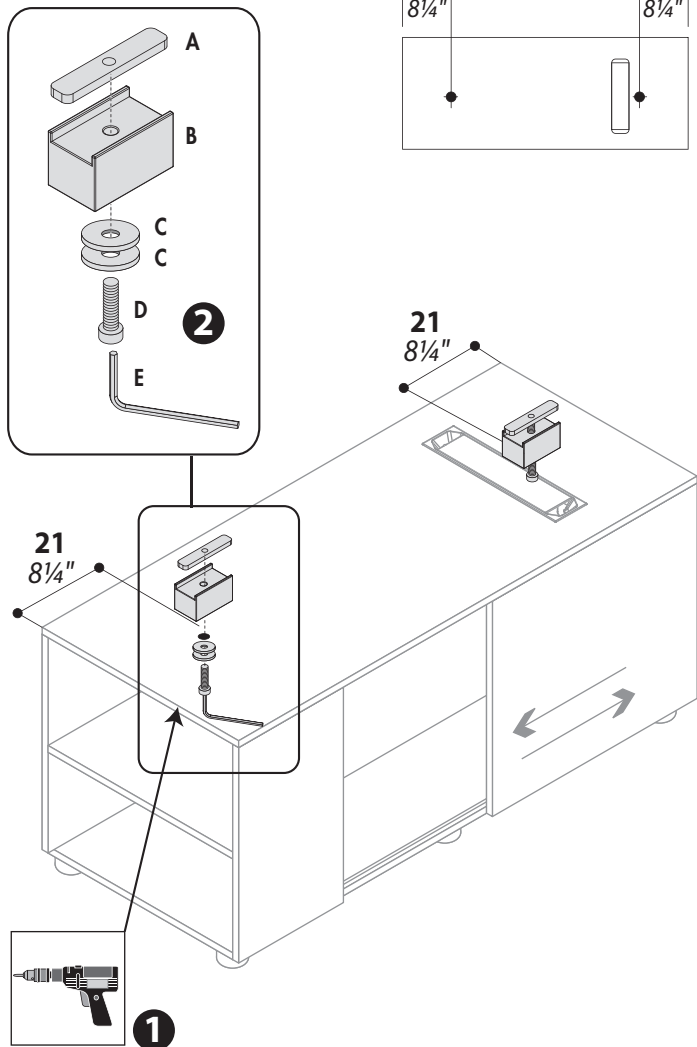


| CODE   | COLOUR                 | CODE  | COLOUR                 | CODE  | D1 x D2  | COLOUR  | CODE      | Ø x L   | COLOUR                                | CODE      | COLOUR        |
|--|------------------------|---|------------------------|---|----------|---|-----------|---|---------------------------------------|-----------|---------------|
| 423068019  | ZINCATO<br>zinc plated | 423067119   | ZINCATO<br>zinc plated | 505190622   | 8,5 x 32 | FERRO<br>1/4" x 1/4" - iron   | 506627009 | 6MA x 55  | ZINCATA<br>6MA x 2 1/8" - zinc plated | 505180222 | FERRO<br>iron |
|  | A<br>x 2               |  | B<br>x 2               |  | C<br>x 4 |  | D<br>x 2  |  | E<br>x 1                              |           |               |



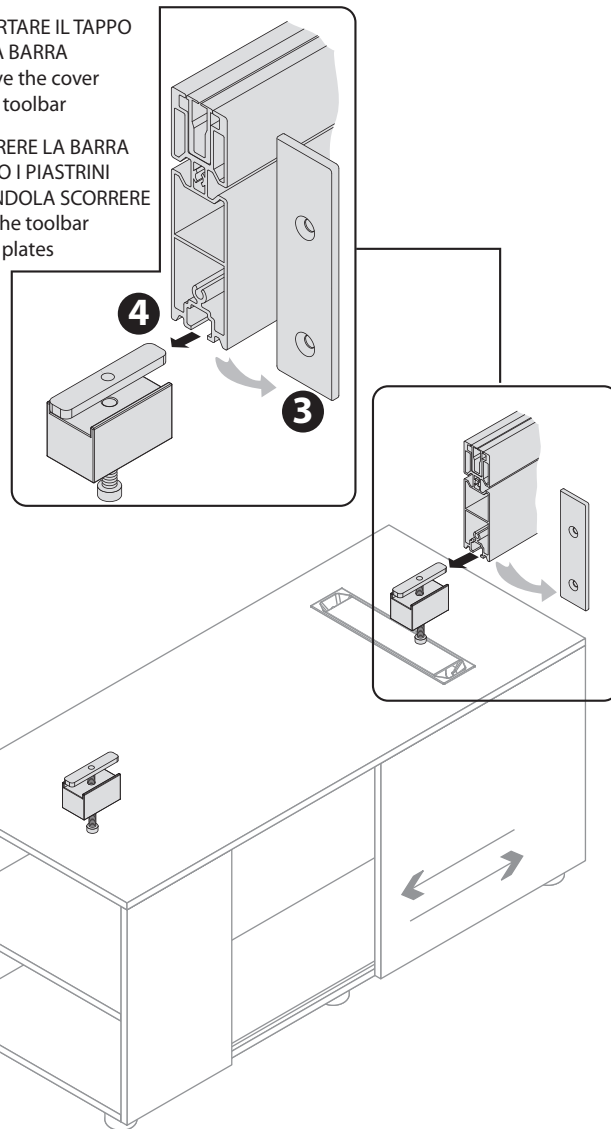
### FASI / phases 1-2

- 1 SFONDARE LE PREFORATURE SOTTO AL CAPPELLO DEL MOBILE DI SERVIZIO  
break the bottom perforation of the service unit
- 2 AVVITARE LA FERRAMENTA  
screw the fittings



### FASI / phases 3-4

- 3 ASPORTARE IL TAPPO DELLA BARRA  
remove the cover of the toolbar
- 4 SCORRERE LA BARRA LUNGO I PIASTRINI  
slide the toolbar in the plates



### FASI / phases 5-6

- 5 CENTRARE LA POSIZIONE  
select the central position
- 6 SERRARE COMPLETAMENTE LE VITI SOTTO  
tighten the under screws
- 7 RIPOSIZIONARE IL TAPPO  
put the cover

