



Arco

cat. Extra

95% virgin wool - 5% polyamide
Flame retardant - 70.000 Martindale



cloud



biber



coast



sepia



lanoso



black



ebony



muskat



fossil



taupe



flanell



calla



snow



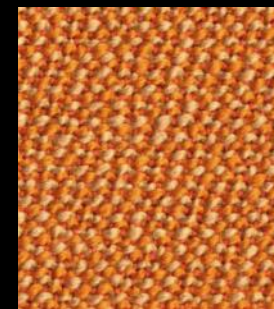
jasmin



bast



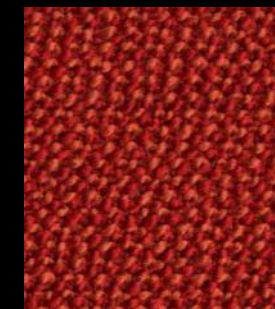
limette



safran



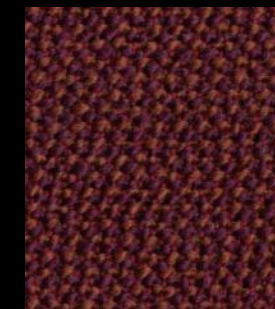
coral



granat



heart



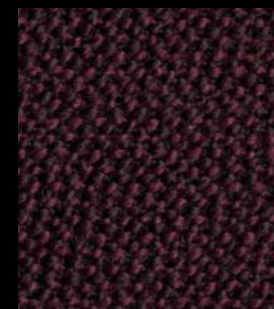
blackberry



henna



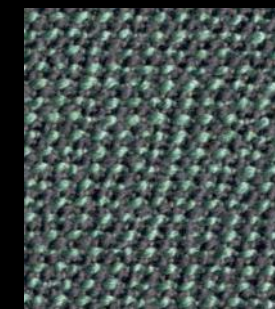
cassis



elegant



velvet



zinn



opal



monte

<div>laCividina</div> <div>cat. Extra</div>	Arco	Technical details	
		Composition	95% virgin wool - 5% polyamide
		Weight	Gr./ml. 980
		Abrasion test	Martindale - ISO 12947-2: 70.000 rubs
		Lightfastness	ISO 105-B02: 5/8
		Pilling	ISO 12945-2: 4/5
		Flame retardant	FAR 25.853 (12 sec. vertical) CAL TB 117 - 2013 DIN 4102-1 B2 EN 13501-1 EN 1021 1/2 BS 5852:2006 (part1) BS 5852:2006 (part2) Crib5 IMO: 2014/90/EU Marine Equipment Directive NF D 60-013 (Art. AM 18)
		Special finishes	Anti-shrink, anti-pilling, yarn dyed
		Environment	Natural, renewable material RAL-UZ 117 Attachment 2+3
		2018	